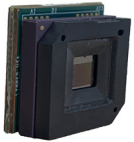


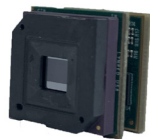
DISCOVER ATOM320 GEN 2: DEVELOPED, ENGINEERED, & MANUFACTURED IN THE US



ATOM320 Gen 2 S



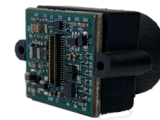
ATOM320 Gen 2 L



ATOM320 Gen 2 SM



ATOM320 Gen 2 LM



ATOM320 Gen 2 SC



ATOM320 Gen 2

Compact-sized thermal imaging camera core with **embedded image correction** and shutterless imaging: ready to integrate into any configuration required.

Offering various lens options and interface configurations, the ATOM320 Gen 2 is a **high performing QVGA core** for a variety of applications.

Designed, engineered, & manufactured in the United States, the ATOM320 Gen 2 is the latest revolutionary 12 micron technology in one of the most compact packages available on the market.



EMBEDDED IMAGE CORRECTION



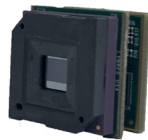
SWAP PACKAGING & DESIGN



VARIOUS LENS & INTERFACE CONFIGURATIONS



ATOM320 GEN 2: READY TO INTEGRATE



ATOM320 Gen 2 S

ATOM320 Gen 2 L

ATOM320 Gen 2 SM

ATOM320 Gen 2 LM

ATOM320 Gen 2 SC

ATOM320 Gen 2

ATI320S
+
Proxy Board

ATI320L
+
Proxy Board

ATI320S
+
Proxy Board
+
MIPI Board

ATI320L
+
Proxy Board
+
MIPI Board

ATI320S
+
Proxy Board
+
Custom Lens Mount

ATI320S
+
Proxy Board
+
MIPI Board
+
Custom Lens Mount



COMPACT &
LIGHTWEIGHT



LOW POWER
CONSUMPTION



INTERFACE
OPTIONS





LENS & I/O
OPTIONS



US MADE

MAIN TECHNICAL ATTRIBUTES

Resolution; pixel pitch	■ 320 x 240 ; 12µm pixel pitch
Sensor performance: NETD (60 Hz, F/1, 300 K)	■ < 60 mK
NUC (Non Uniformity Correction) and BPR (Bad Pixel Replacement)	■ Factory pre-calibrated and compensated
Frame rate	■ 60 Hz full frame
Time to first image	■ < 4 seconds
Latency	■ 5 lines
Interface Options	■ USB Parallel or MIPI

CONFIGURATION	ELECTRICAL MOUNTING	DIMENSIONS L X W X H MM	LENS	INTERFACE	WEIGHT	AMBIENT
ATOM320 GEN 2 S ATOM320 GEN 2 L	 Hirose 0.5 mm 40Pin	17.5 x 17.5 x 7.8 w/o lens	M10, M18, M12, M24 supported	Single Rail 4.5-5.5 V (typical USB levels)	4.5 g. 8.5 g.	-40° - 60° C
ATOM320 GEN 2 SM ATOM320 GEN 2 LM	 Hirose 0.35 mm 24Pin	17.5 x 17.5 x 12 w/o lens	M10, M18, M12, M24 supported	Single Rail 3.3 V (typical MIPI levels)	6 g. 10 g.	-40° - 60° C



LYNRED USA
373 Route 46 W
Fairfield, NJ 07004
Phone: 973-882-0211
info@lynred-usa.com