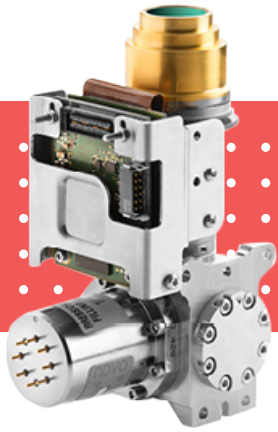




LYNRED USA



Built on proven technology, the Daphnis-HD MW is smallest pixel pitch offer from LYNRED.

It provides simplified interface for an easy and quick integration into your system in 16:9 format.



INFRARED DETECTOR

# DAPHNIS-HD MW

1280 x 720 - 10  $\mu$ m pitch - MCT

## LATEST LYNRED PRODUCT GENERATION FOR ALL APPLICATIONS REQUIRING 16:9 HD FORMAT



COMPACTNESS



LONGER RANGE



LARGER FOV (FIELD OF VIEW)



IMPROVED RELIABILITY

DEFENSE

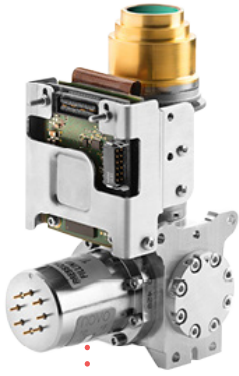


SURVEILLANCE



ORDERING REFERENCE: DAPHNIS-HD MW

# DAPHNIS-HD MW



RELIABILITY



LONGER RANGE



HIGH RESOLUTION

## ●●LATEST LYNRED PRODUCT GENERATION FOR ALL APPLICATIONS REQUIRING 16:9 HD FORMAT ●●

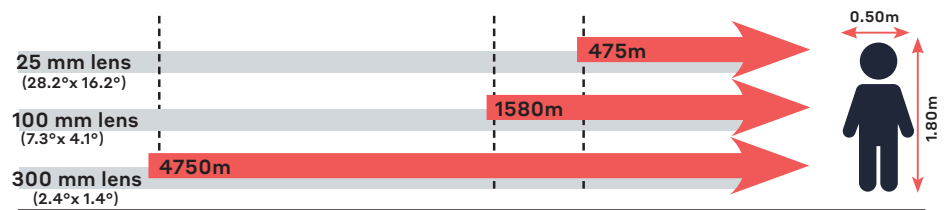
ARRAY FEATURES	
Detector spectral response	■ 3.7 $\mu\text{m}$ - 4.8 $\mu\text{m}$
FPA operating temperature	■ Up to 110 K
ROIC ( READ-OUT INTEGRATED CIRCUIT )	
ROIC architecture	■ Digital outputs / Direct Injection input circuit
ROIC functionalities	■ Programmable integration time, anti-blooming, invert/revert; binning, snapshot operation, (IWR or ITR), high dynamic range
Windowing modes	■ 320 x 4 minimum programmable
Charge handling capacity	■ 3 main gains: 1.1 Me-, 2.7 Me-, 5.6 Me-
INPUT / OUTPUT	
Board Power supply	■ 6V <sub>DC</sub>
Video output	■ 14 bits, cameralink®
Frame rate	■ Up to 85 Hz full frame rate

TYPICAL PERFORMANCES			
NETD	■ 20 mK (293K, 70% well fill, 2.7 Me-)		
Array operability	■ 99.8%		
	RM2	RM3	K508N
FOV (*)	f/2 to f/4	f/2 to f/4	f/2 to f/4
Cooler power supply	12 V	24 V	24 V
Cooler power @ 20°C (regulation/cooldown) (**)	4 W <sub>DC</sub> / 12 W <sub>DC</sub>	4W <sub>DC</sub> / 13 W <sub>DC</sub>	4 W <sub>DC</sub> / 13 W <sub>DC</sub>
Cooldown time @ 20°C	6 min	5 min	4 min 30 s
Cooler dimensions (mm)	Ø 30.5 x L 82	Ø 46 x L 71	Ø 46 x L 71
IDCA height (optical axis, mm)	H < 123.5	H < 144	H < 144
Weight	0.47 kg	0.64 kg	0.67 kg
Operating temperature	[- 40° C; 71° C]	[- 40° C; 71° C]	[- 40° C; 71° C]
MTTF for 24/7 typical surveillance profile in hot conditions	27.000 h	9.700 h	27.000 h

(\*) Contact LYNRED for available configurations, (\*\*) W<sub>DC</sub> = at cooler C&CE DC input

OPTIONS
Technical training and support
Demokit for easy image processing in lab
Proximity driving electronics (Including ADC)

### Recognition distances for human measuring 1.80 m x 0.50 m



Range for Johnson's criteria, target deltaT = 2K, perfect atmospheric and optics transmissions, theoretical square pixel.



Exclusive Distributor North America

**LYNRED USA**  
 373 Route 46 W  
 Fairfield, NJ 07004  
 Phone: 973-882-0211  
 info@lynred-usa.com

