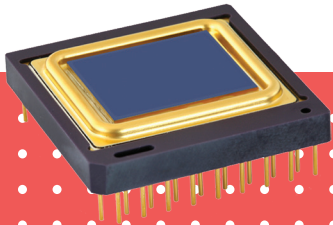




LYNRED USA



INFRARED DETECTOR

# PICO640 Gen2

640 x 480 – 17 μm

The thermal image sensor Pico640Gen2 is a versatile product.

Built on proven technology, it limits development costs and shortens time to market.

## DESIGNED TO ANSWER ALL YOUR NEEDS



ENHANCED IMAGE QUALITY



PROVEN RELIABILITY



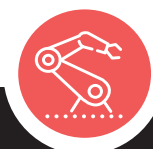
SEAMLESS INTEGRATION

DEFENSE

LEISURE

SURVEILLANCE

INDUSTRY



ORDERING REFERENCE: PICO640-046 / PICO640-046+

# DESIGNED TO ANSWER ALL YOUR NEEDS

## PICO 640Gen2

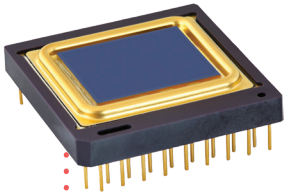


IMAGE QUALITY



RUGGEDIZED FOR HARSH ENVIRONMENT



RELIABLE



SEAMLESS INTEGRATION



LOW POWER CONSUMPTION

### ENHANCED IMAGE QUALITY

Sharp contrast	<ul style="list-style-type: none"> <li>■ Thermal sensitivity &lt; 50 mK (f/ 1, 300K, 30Hz)</li> <li>■ Thermal sensitivity &lt; 40 mK (f/ 1, 300K, 30Hz) (Pico640+)</li> <li>■ Extended operating temperature [-40°C; +85°C]</li> </ul>
Fluid and smooth image	<ul style="list-style-type: none"> <li>■ Frame rate up to 120Hz</li> <li>■ Thermal time constant &lt; 12 ms</li> </ul>
High uniformity	<ul style="list-style-type: none"> <li>■ Array operability &gt; 99.5 %</li> <li>■ Array operability ≥ 99.8 % (Pico640+)</li> </ul>

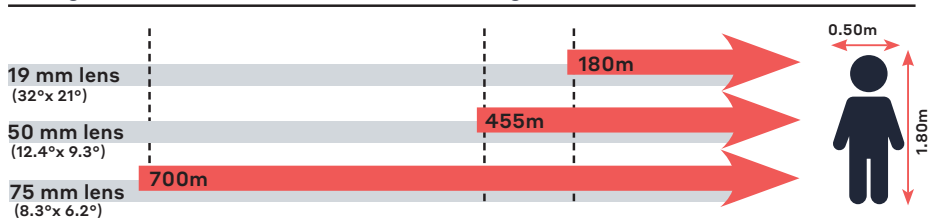
### PROVEN RELIABILITY

	<ul style="list-style-type: none"> <li>■ Standards MIL810 – MIL883</li> </ul>
	<ul style="list-style-type: none"> <li>■ Thermal Weapon Sight (TWS) qualified (Pico640+)</li> </ul>
Product availability and exportability	<ul style="list-style-type: none"> <li>■ Products designed and manufactured in Europe</li> </ul>
Product delivery to our customers	<ul style="list-style-type: none"> <li>■ On-time order deliveries &gt; 95%</li> <li>■ Guaranteed 10 years against vacuum loss</li> </ul>

### SEAMLESS INTEGRATION

Product platform	<ul style="list-style-type: none"> <li>■ Full access to sensor features (I<sup>2</sup>C)</li> <li>■ External frame synchronization capability</li> </ul>
Simplified image processing	<ul style="list-style-type: none"> <li>■ TECless, Shutterless compatible</li> <li>■ Single gain table and predictable offset management</li> </ul>
Battery optimization	<ul style="list-style-type: none"> <li>■ Low power consumption &lt; 130 mW</li> </ul>

### Recognition distances for human measuring 1.80 m x 0.50 m



Range for Johnson's criteria, target deltaT = 2K, perfect atmospheric and optics transmissions, theoretical square pixel.



Exclusive Distributor North America

LYNRED USA  
373 Route 46 W  
Fairfield, NJ 07004  
Phone: 973-882-0211  
info@lynred-usa.com