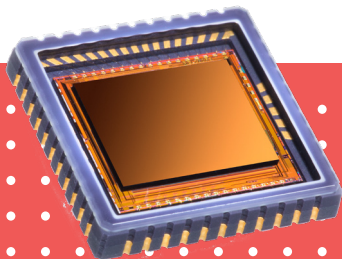




LYNRED USA



SNAKE SW TECLESS

640 x 512 – 15µm pitch – InGaAs

The Infrared detector designed for the most demanding SWIR applications such as surveillance, industrial and science applications.

LYNRED InGaAs technology provides leading edge performance in terms of sensitivity, noise, dark current and operability.

SEE BEYOND WHAT IS **VISIBLE**



EASY INTERPRETATION



VISIBLE LIKE



ENHANCE SORTER DETECTION CAPABILITY



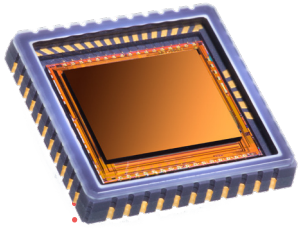
DEFECTS DETECTION IN PROCESSING

INDUSTRY

SURVEILLANCE



SNAKE SW TECLESS



ARRAY FEATURES	
Sensor type	■ InGaAs PIN-Photodiode
Spectral response	■ 0.9 μm x 1.7 μm

ROIC (READ-OUT INTEGRATED CIRCUIT)	
Integration type	■ Snapshot / Global Shutter
Readout modes	■ IWR, ITR, NDR
Exposure time	■ 1 μs to full frame
Maximum full frame rate @ 9 MHz	■ 100 fps / 180 fps / 300 fps (2, 4 or 8 outputs)
Maximum frame rate @ 9 MHz	■ 30 KHz (windowing mode)
Maximum pixel rate	■ 18 MHz per output
Charge handling capacity	■ 43 10^3 e- (Gain 0) / 120 10^3 e- (Gain 1) / 1.44 10^6 e- (Gain 2)

TYPICAL PERFORMANCES	
Quantum efficiency (QE)	■ 70% from 1 μm to 1.6 μm
Noise with ROIC	■ 30 e- (Gain 0)
Dark current	■ 30 fA @ 0.2 V detector bias
Array operability	■ 99.9% (*)
Non uniformity without correction	■ 4%

PACKAGING	SNAKE SW	SNAKE SW TECLESS
Dimension (W x H x D)	■ 42 mm x 30 mm x 9 mm	16 mm x 16.5 mm x 2.8 mm
Windows	■ Sapphire	
Number of pins	■ 28 ■ Standard 1/10 inch pin pitch	44 Standard CLCC, 1.27 pin pitch
Cooler	■ Single stage TE Cooler	Single stage TE Cooler
Packaging characteristics	■ Hermetically sealed	Hermetically sealed
Operating and storage temperature	■ [- 40°C; +71°C]	[- 20°C; +60°C]

(*) The fraction of pixels with responsivity deviation less than +/- 30 % from the mean.

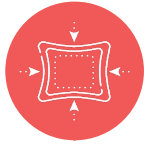
OPTIONS
Technical training and support
Proximity driving electronics (Including ADC)



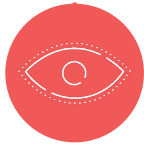
VERSATILE



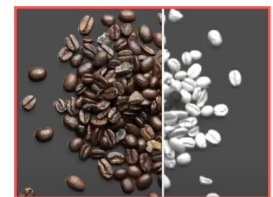
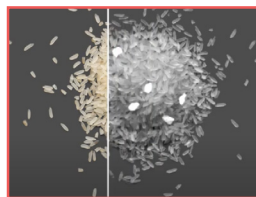
LOW NOISE



COMPACT



EASY
INTERPRETATION
VISIBLE-LIKE



Exclusive Distributor North America

LYNRED USA
373 Route 46 W
Fairfield, NJ 07004
Phone: 973-882-0211
info@lynred-usa.com

