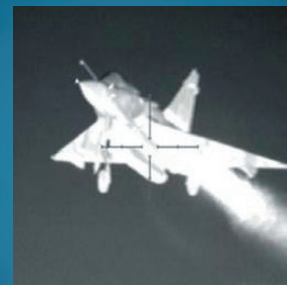
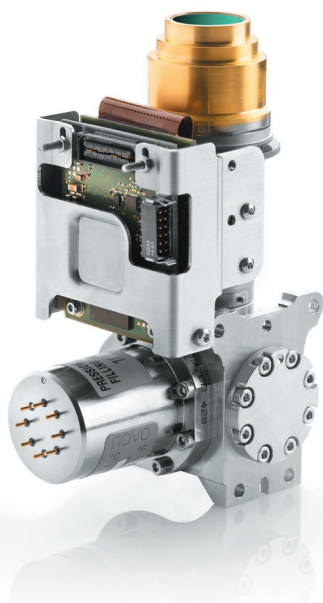


DAPHNIS-HD MW

1280 x 720 - 10 μm pitch - MCT



→ HD 10 μm pitch:
the best offer for compact 16:9
format MWIR systems.



DAPHNIS-HD MW is the suitable product for all your applications requiring 16:9 HD format: airborne, naval, and ground vehicles.

This smallest pixel pitch innovation from Sofradir guarantees:

- HIGH RESOLUTION
- LONGER RANGE
- LARGER FIELD OF VIEW
- COMPACTNESS
- IMPROVED RELIABILITY

DAPHNIS-HD MW takes full advantage of Sofradir latest HgCdTe technologies. It provides simplified interfaces for an easy and quick integration in your systems.

The proxy board offers management and data processing of the detector as well as digital output.

ARRAY FEATURES

Format	1280 x 720
Pixel pitch	10 μm x 10 μm
Detector spectral response	3.7 μm - 4.8 μm
FPA Operating temperature	Up to 120 K

ROIC (READ-OUT INTEGRATED CIRCUIT)

ROIC architecture	Digital outputs; Direct Injection input circuit
ROIC functionalities	Programmable integration time, anti-blooming, invert/revert; binning, snapshot operation, selectable read mode (IWR or ITR), programmable windowing, high dynamic range
Windowing modes	320 x 4 minimum programmable
Charge handling capacity	3 selectable gains: 0.7 Me-, 2.2 Me-, 4.4 Me-

INPUT / OUTPUT

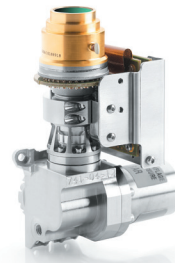
Board Power supply	6V _{DC}
Data processing	Bad Pixel Replacement (BPR) & Non Uniformity Correction (NUC)
Video output	14 bits, CAMERALINK®
Frame rate	Up to 85 Hz full frame rate

DAPHNIS-HD MW

DAPHNIS-HD MW

1280 x 720 - 10 μ m pitch - MCT

→ HD 10 μ m pitch:
the best offer for compact 16:9
format MWIR systems.



TYPICAL PERFORMANCES

NETD	< 20 mK (293K, 50% well fill, 85 Hz)		
Array operability	99.8%		
	RM2 / K563	RM3 / K508	RM4
FOV	f/2; f/3; f/4	f/2; f/3; f/4	f/2; f/3; f/4
Cooler power supply	12 V	24 V	12 V
Regulated input power (*)	< 6.5 W _{DC}	< 6.5 W _{DC}	< 7.5 W _{DC}
Cooldown input power (*)	< 12 W _{DC}	< 14 W _{DC}	< 17 W _{DC}
Cooldown time @ 20°C	5 min	4 min	4 min
Cooler dimensions (mm)	Ø 30.5 x L 82	Ø 46 x L 71	Ø 43.5 x L 78
IDCA height (optical axis, mm)	H < 123.5	H < 144	H < 127
Weight	< 0.55 kg	< 0.75 kg	< 0.75 kg
Operating temperature	- 40° C to 71° C	- 40° C to 71° C	- 40° C to 71° C

(*) W_{DC} = at cooler C&CE DC input

OPTIONS

Technical training and support

Cooler driving electronics

APPLICATIONS



Exclusive Distributor - North America

Technical characteristics described in this data sheet are for information only.
They are not contractual and may change without prior notice.



SOFRADIR-EC

373 Route 46W, Fairfield, NJ 07004 USA
Phone: 973-882-0211 Fax: 973-882-0997
Email: info@sofradir-ec.com
www.sofradir-ec.com



DAPHNIS-HD MW