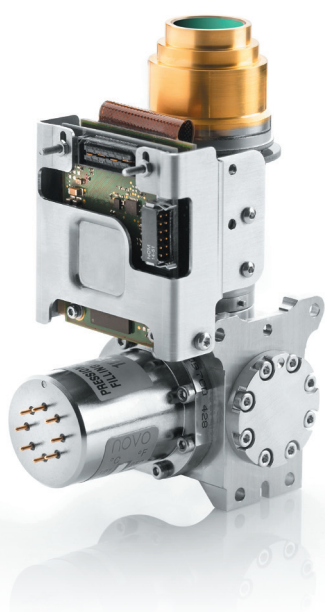
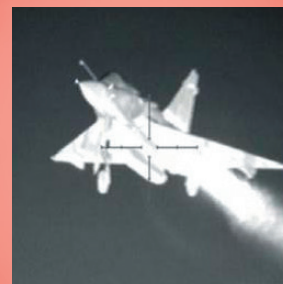


DAPHNIS-XGA MW

1024 x 768 - 10 μm pitch - MCT

→ XGA 10 μm pitch:
easy upgrade from VGA 15 μm pitch



DAPHNIS-XGA MW is the answer to your needs for VGA 15 μm systems performance improvements. Offering the same chip size, this product is suitable for all applications: ground vehicles, airborne, naval and portable.

DAPHNIS-XGA MW guarantees:

- HIGH RESOLUTION
- LONGER RANGE
- LARGER FIELD OF VIEW
- COMPACTNESS
- EASY TRANSFER FROM 15 μm TO 10 μm
- IMPROVED RELIABILITY

DAPHNIS-XGA MW takes full advantage of Lynred latest HgCdTe technologies. It provides simplified interfaces for an easy and quick integration in your systems.

The proxy board offers management and data processing of the detector as well as digital output.

ARRAY FEATURES

Format	1024 x 768
Pixel pitch	10 μm x 10 μm
Detector spectral response	3.7 μm – 4.8 μm
FPA Operating temperature	Up to 120 K

ROIC (READ-OUT INTEGRATED CIRCUIT)

ROIC architecture	Direct Injection input circuit
ROIC functionalities	Programmable integration time, anti-blooming, invert/revert; binning, snapshot operation, selectable read mode (IWR or ITR), programmable windowing, high dynamic range
Windowing modes	320 x 4 minimum programmable
Charge handling capacity	3 main gains: 0.8 Me ⁻ , 2.6 Me ⁻ , 5.2 Me ⁻

INPUT / OUTPUT

Board Power supply	6V _{DC}
Video output	14 bits, CAMERALINK®
Frame rate	Up to 100 Hz full frame rate

DAPHNIS-XGA MW

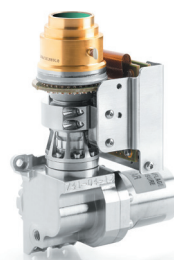


LYNRED USA

DAPHNIS-XGA MW

1024 x 768 - 10 µm pitch - MCT

→ XGA 10 µm pitch:
easy upgrade from VGA 15 µm pitch



TYPICAL PERFORMANCES

NETD	20 mK [293K, 70% well fill, 2.6 Me-]			
Array operability	99.8%			
	RM2 / K563	RM4	RM3 / K508	K508 N
FOV / Driving electronics (*)	f/2 to f/4	f/2 to f/4	f/2 to f/4	f/2 to f/4
Cooler power supply	12 V	12 V	24 V	24 V
Cooler regulated input power @ 20°C (**)	4 W _{DC}	4.5 W _{DC}	4.7 W _{DC}	4.7 W _{DC}
Cooldown input power @ 20°C (**)	12 W _{DC}	21 W _{DC}	13 W _{DC}	13 W _{DC}
Cooldown time @ 20°C	6 min	4 min	4 min 30 s	4 min 30 s
Cooler dimensions (mm)	Ø 30.5 × L 82	Ø 43.5 × L 78	Ø 46 × L 71	Ø 46 × L 71
IDCA height (optical axis, mm)	H < 123.5	H < 127	H < 144	H < 144
Weight	0.47 kg	0.67 kg	0.64 kg	0.67 kg
Operating temperature	- 40° C to 71° C	- 40° C to 71° C	- 40° C to 71° C	- 40° C to 71° C
MTTF for 24/7 typical surveillance profile	8.000 h	18.000 h	10.000 h	17.000 h

(*) Contact Sofradir for available configurations

(**) W_{DC} = at cooler C&CE DC input

OPTIONS

Technical training and support

APPLICATIONS



Technical characteristics described in this data sheet are for information only.
They are not contractual and may change without prior notice.

Exclusive Distributor North America

LYNRED USA

373 Route 46W
Fairfield, NJ, 07004 USA
Phone: 973-882-0211
Fax: 973-882-0997
info@lynred-usa.com




LYNRED USA
www.lynred-usa.com

DAPHNIS-XGA MW