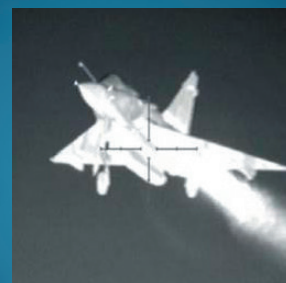
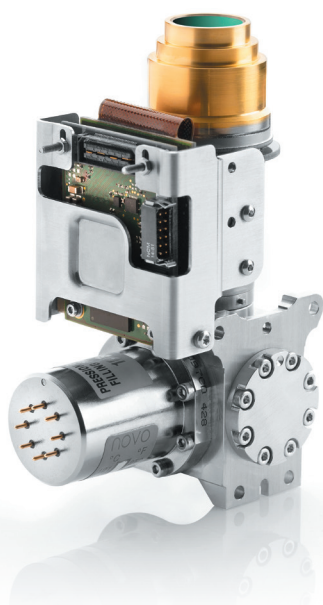


DAPHNIS-XGA MW

1024 x 768 - 10 μm pitch - MCT



→ XGA 10 μm pitch:
easy upgrade from VGA 15 μm pitch



DAPHNIS-XGA MW is the answer to your needs for VGA 15 μm systems performance improvements. Offering the same chip size, this product is suitable for all applications: ground vehicles, airborne, naval and portable.

DAPHNIS-XGA MW guarantees:

- HIGH RESOLUTION
- LONGER RANGE
- LARGER FIELD OF VIEW
- COMPACTNESS
- EASY TRANSFER FROM 15 μm TO 10 μm
- IMPROVED RELIABILITY

DAPHNIS-XGA MW takes full advantage of Sofradir latest HgCdTe technologies. It provides simplified interfaces for an easy and quick integration in your systems.

The proxy board offers management and data processing of the detector as well as digital output.

DAPHNIS-XGA MW

ARRAY FEATURES

Format	1024 x 768
Pixel pitch	10 μm x 10 μm
Detector spectral response	3.7 μm – 4.8 μm
FPA Operating temperature	Up to 120 K

ROIC (READ-OUT INTEGRATED CIRCUIT)

ROIC architecture	Direct Injection input circuit
ROIC functionalities	Programmable integration time, anti-blooming, invert/revert; binning, snapshot operation, selectable read mode (IWR or ITR), programmable windowing, high dynamique range
Windowing modes	320 x 4 minimum programmable
Charge handling capacity	3 selectable gains: 0.7 Me-, 2.2 Me-, 4.4 Me-

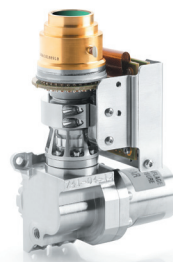
INPUT / OUTPUT

Board Power supply	6V _{DC}
Data processing	Bad Pixel Replacement (BPR) & Non Uniformity Correction (NUC)
Video output	14 bits, CAMERALINK®
Frame rate	Up to 100 Hz full frame rate

DAPHNIS-XGA MW

1024 x 768 - 10 μ m pitch - MCT

→ XGA 10 μ m pitch:
easy upgrade from VGA 15 μ m pitch



TYPICAL PERFORMANCES

NETD	< 20 mK (293K, 50% well fill, 85 Hz)		
Array operability	99.8%		
	RM2 / K563	RM3 / K508	RM4
FOV	f/2; f/3; f/4	f/2; f/3; f/4	f/2; f/3; f/4
Cooler power supply	12 V	24 V	12 V
Regulated input power (*)	< 6.5 W _{DC}	< 6.5 W _{DC}	< 7.5 W _{DC}
Cooldown input power (*)	< 12 W _{DC}	< 14 W _{DC}	< 17 W _{DC}
Cooldown time @ 20°C	5 min	4 min	4 min
Cooler dimensions (mm)	Ø 30.5 × L 82	Ø 46 × L 71	Ø 43.5 × L 78
IDCA height (optical axis, mm)	H < 123.5	H < 144	H < 127
Weight	< 0.55 kg	< 0.75 kg	< 0.75 kg
Operating temperature	- 40° C to 71° C	- 40° C to 71° C	- 40° C to 71° C

(*) W_{DC} = at cooler C&CE DC input

OPTIONS

Technical training and support

Split cooler upon request

APPLICATIONS



Exclusive Distributor - North America

Technical characteristics described in this data sheet are for information only. They are not contractual and may change without prior notice.



SOFRADIR-EC

373 Route 46W, Fairfield, NJ 07004 USA
Phone: 973-882-0211 Fax: 973-882-0997
Email: info@sofradir-ec.com
www.sofradir-ec.com



DAPHNIS-XGA MW