

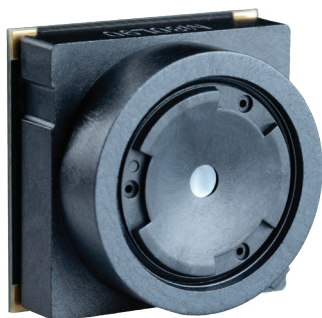
ThermEye™-b90

ThermEye™-b120

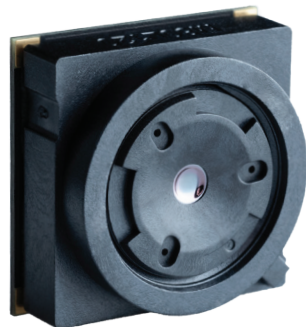
A disruptive thermal sensor technology for smart buildings.



ThermEye™-b90



ThermEye™-b120



Protects privacy



Day / Night



Multifunctional



Long battery life



Large area covered

- + Multifunctional sensor (detection, tracking, people counting)
- + Very Low Power and compact
- + Large area covered

Ideal for...

- > **Space management:** occupancy data tracking for optimal use of square meterage
- > **Energy management:** real-time data analysis for lower energy bills
- > **Safety:** hotspot detection for fire prevention
- > **Security:** intrusion detection

Plus points

- > Nonintrusive and anonymous
- > Ideal for wireless/IoT solutions

ThermEye™-b90

ThermEye™-b120

Performance

80 x 80 pixel thermal sensors (LWIR microbolometer technology)

Operating temperature: -10°C to +50°C

Wide field of view: HFOV 90° or HFOV 120°



Flexibility

Continuous mode from 1 Hz to 100 Hz

Intermittent mode for very low power applications (e.g. 1 frame/min)

Surface Mount Device BGA^(*), compliant with reflow process (IPC/JEDEC J-STD-020E)

HSync/VSync clocking

Full digital (integrated ADC and DAC)

(*)Ball Grid Array

Long battery life

Power consumption ≤ 55 mW (continuous mode)

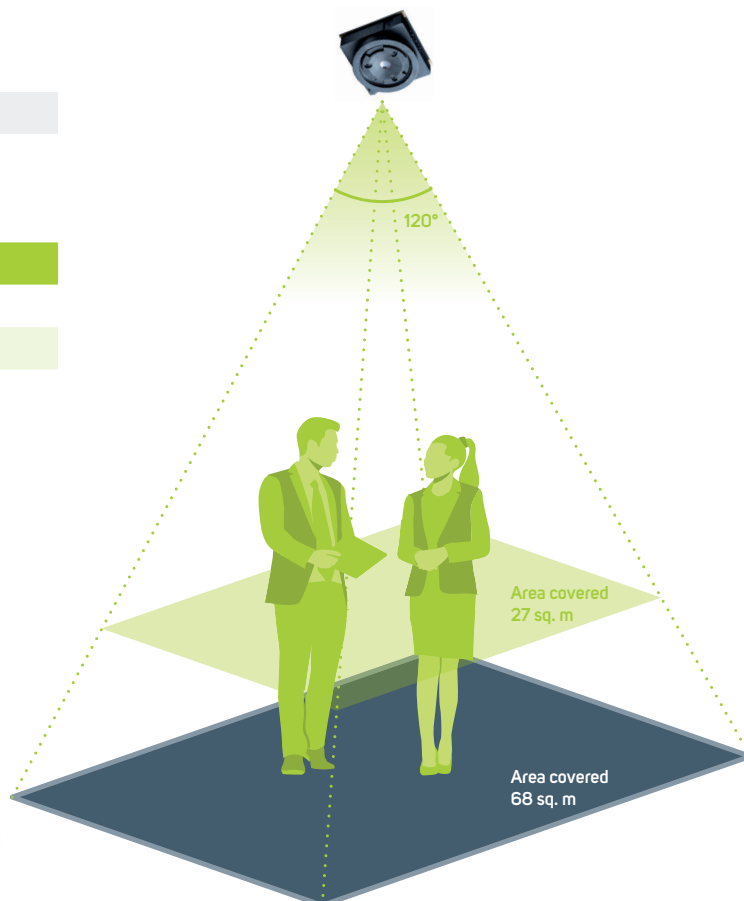
In intermittent mode @ 1 frame/2min 1 battery AA lasts for 5 years

Compact form factor

Dimensions (mm): 14 x 14 x 9

Weight < 2g

	Product number	HFOV
ThermEye™-b90	M80L90	90°
ThermEye™-b120	M80L120	120°



Exclusive Distributor
North America

Lynred USA
373 Route 46W
Fairfield, NJ 07004 USA
Phone: 973-882-0211
Fax: 973-882-0997
Email: info@lynred-usa.com
www.lynred-usa.com

ThermEye™-b90 / ThermEye™-b120