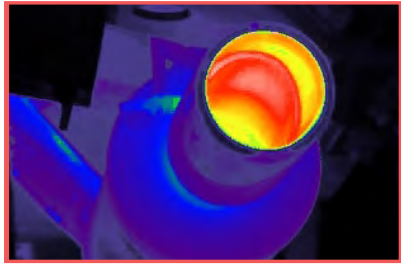


HIGH-PERFORMANCE INFRARED CAMERAS THAT TRANSFORM YOUR RESEARCH



RESEARCH & DEVELOPMENT



OPTICAL GAS IMAGING



MACHINE VISION

- +** VARIOUS OPTIONS OF LYNRED IDDCA
- +** OPEN/CLOSED CHASSIS AVAILABLE
- +** HIGH FRAME RATES, HIGH SENSITIVITY
- +** LOW POWER, COMPACT DESIGN
- +** FLEXIBLE LENS CONFIGURATIONS

AVAILABLE CAMERA FEATURES	IMAGE PROCESSING FEATURES
ON-BOARD UNIFORMITY CORRECTION AND BPR	BINNING
14-BIT CAMERA LINK OUTPUT	EDGE-ENHANCEMENT
CONNECTION KIT (FACILITATES TESTING)	EDGE SHARPENING
WINDOWS GRAPHIC USER INTERFACE	HISTOGRAM EQUALIZATION
PLUG-AND-PLAY OEM OPERATION	FLIP VIDEO
DESKTOP ANALYSIS SOFTWARE	DIGITAL ZOOM*
C++ SOFTWARE DEVELOPMENT KIT	

* Indicates feature that may affect frame rate

<i>* Information based on typical performances and availability</i>	MITIE SCORPIO BB MW	MITIE SCORPIO MW	MITIE SCORPIO LW	MITIE MARS VLW
Format (resolution)	640 x 512	640 x 512	640 x 512	320 x 256
Pixel Pitch	15µm	15µm	15µm	30µm
Detector Material	MCT	MCT	MCT	MCT
Spectral Response	1.5 - 6µm	3.7 - 4.8µm	7.7 - 9.3µm	7.7 - 11.7µm
Detector NETD (typical)	22 mK	") mK	20 mK	17 mK
Frame Rate	Up to 120Hz full frame rate	Up to 120Hz (full frame), 1 KHz @ 166 x 166, > 3.2 KHz @ 160 x 1	Up to 120Hz (full frame), 1 KHz @ 185 x 185, 14.6 KHz @ 160 x 1	Up to 320Hz full frame rate
FPA Operating Temp.	up to 110 K	up to 110 K	up to 90 K	50 K to 75 K
(ROIC) Selection	Serial electrical interface	Serial electrical interface	Serial electrical interface	Parallel & serial electrical interface
(ROIC) architecture	Snapshot operation, direct injection input circuit, selectable read mode (ITR/IWR)	Snapshot operation, direct injection input circuit, selectable read mode (ITR/IWR)	Snapshot, direct injection, Integrate then Read (ITR)	Snapshot, direct injection, Integrate then Read (ITR)
(ROIC) functionalities	Programmable integration time, anti-blooming	Programmable integration time, anti-blooming	Programmable integration time, anti-blooming, image invert / revert / inverse, interlaced mode	Programmable integration time, anti-blooming
Array Operability	99.6%	99.8%	99.8%	99.6%
Digital Output	HDMI, 14-bit Camera Link	HDMI, 14-bit Camera Link	HDMI, 14-bit Camera Link	HDMI, 14-bit Camera Link
Video Output	NTSC or PAL	NTSC or PAL	NTSC or PAL	NTSC or PAL
Cooldown Time	< 7min30s	4min50s (RM3 cooler), 5min30s (K508 cooler)	6-7 min (K508 & RM3 cooler), 3.5 min (LSF)	6 min
NUC	2.5% RMS (σ/mean, 293 K uncorrected performance)	2.5% RMS (σ/mean, 293 K uncorrected performance)	<20 mK (293K, 50% well fill, 85 Hz)	5% RMS (σ/mean, 300 K uncorrected performance)
FOV	f/2, f/3	f/2, f/4	f/2; f/2.24; f/1.76	f/2
Operating Temp.	[- 40°C; +71°C]	[- 40°C; +71°C]	[- 40°C; +71°C]	[- 40°C; +71°C]
Cooler Options	RM3, K508N	K508, RM3, RM2	K508, RM3	LS5-7i
Dimensions	19.2 x 11.4 x 12.7 cm (Enclosed) 14.9 x 7.7 x 7.6 cm (Open, no lens)	19.2 x 11.4 x 12.7 cm (Enclosed) 14.9 x 7.7 x 7.6 cm (Open, no lens)	20.6 x 11.4 x 12.7 cm (Enclosed) 14.9 x 7.7 x 7.6 cm (Open, no lens)	27.1 x 18.5 x 17 cm (Enclosed) 18.8 x 10.9 x 12.3 cm (Open, no lens)



LYNRED USA
373 Route 46W
Fairfield, NJ 07004

Phone: 973-882-0211
Fax: 973-882-0997

E: info@lynred-usa.com
www.lynred-usa.com

Follow us:



Technical characteristics described in this data sheet are for information only and are not contractual. Because of ongoing product enhancements, specifications are subject to change without notice. Export of these products from the United States is controlled by the US Government. Prior authorization is required for re-export or transfer.