

# Weather satellite detectors from SWIR to VLWIR (1 $\mu\text{m}$ - 14.5 $\mu\text{m}$ )

## MTG FCI Imager

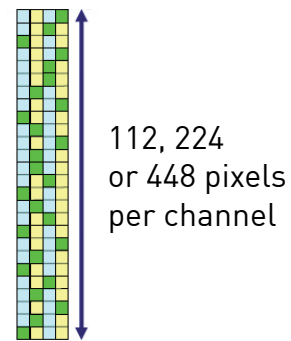
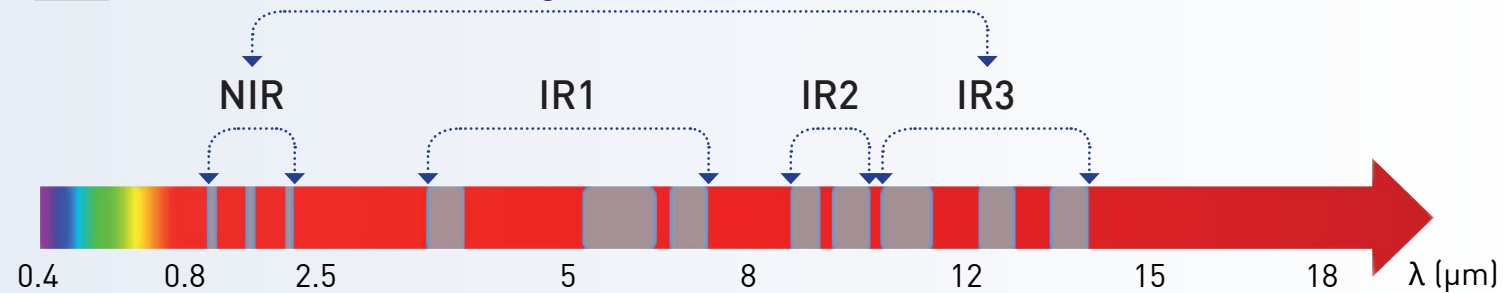
4 types of detectors covering all the IR waveband from 1.3  $\mu\text{m}$  up to 14  $\mu\text{m}$

## MTG IRS Sounder

2 types of detectors covering all the IR waveband from 3.3  $\mu\text{m}$  up to 14.7  $\mu\text{m}$

### FCI

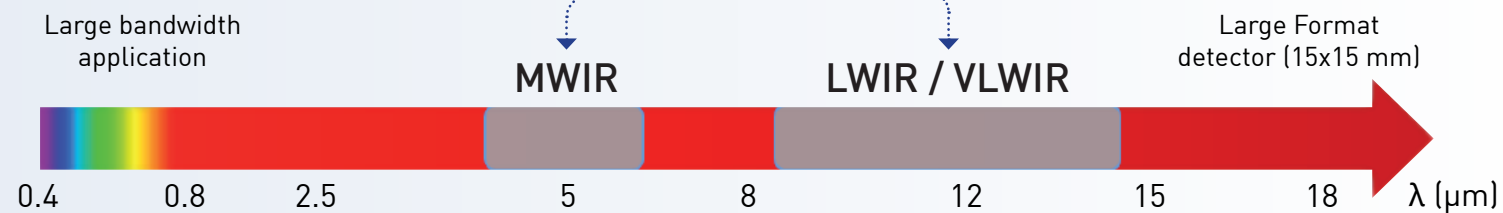
1 Flight Model = 4



### IRS

Large bandwidth application

1 Flight Model = 2



Technical characteristics described in this data sheet are for information only. They are not contractual and may change without prior notice.

Exclusive Distributor - North America



**SOFRADIR-EC**  
373 Route 46W, Fairfield, NJ 07004 USA  
Phone: 973-882-0211 Fax: 973-882-0997  
Email: info@sofradir-ec.com  
www.sofradir-ec.com



ProIG - 6331 ©Sofradir - October v01



**WORLDWIDE LEADER**  
FOR THE DEVELOPMENT AND DELIVERY OF  
IR DETECTORS FOR SPACE APPLICATIONS

#### >30 IR DETECTORS "IN SPACE"

- Venus Express
  - Spirale
- Phobos-Grunt
  - Hayabusa
  - Sentinel 2A
  - Sentinel 2B
  - Sentinel 2D
  - Exomars

70 flight Models already delivered

#### UNIVERSE APPLICATIONS

- Earth Observation
- Communications & Control
- Planetary Exploration
- National Space

October 2017:  
Launching Saturn



# From VISIR to SWIR (0.4 $\mu\text{m}$ – 2.5 / 3 $\mu\text{m}$ )

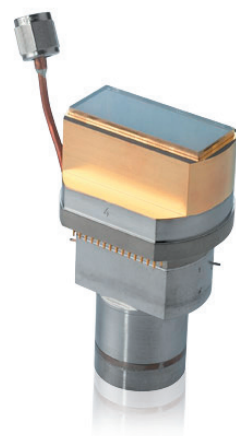
## NEPTUNE / SATURN

For SWIR hyperspectral imaging and spectroscopy  
500x256 / 1000x256 - 30  $\mu\text{m}$

Spectral band	0.4 – 2.5 $\mu\text{m}$ 0.9 – 2.5 $\mu\text{m}$ Extension possible on request
Available detector configuration	Active or passive cooler

### ON BOARD:

- Prisma
- HYSUI
- Tropomi
- GISAT



## NGP

1024x1024 -15  $\mu\text{m}$

Spectral band	0.4 – 2.5 $\mu\text{m}$ 0.9 – 2.5 $\mu\text{m}$ Extension possible on request
Available detector configuration	Passive cooling Active cooling on request

### ON BOARD:

- Sentinel-5
- Microcarb

## SENTINEL-2

3 bands 1298x1 or 2 bands -15  $\mu\text{m}$

Spectral band	2 bands to be selected between 0.9 – 2 $\mu\text{m}$ 1 band to be selected between 0.9 – 2.5 $\mu\text{m}$
Available detector configuration	Passive cooling

### ON BOARD:

- Sentinel-2A
- Sentinel-2B
- Sentinel-2C
- Sentinel-2D



# From MWIR to VLWIR (3 $\mu\text{m}$ – 15 $\mu\text{m}$ )

## NEPTUNE

500x256 -30  $\mu\text{m}$

Spectral band	1 – 5 $\mu\text{m}$
Available detector configuration	Active cooler

### ON BOARD:

- Chandrayaan 2



## MARS

320x256 -30  $\mu\text{m}$

Spectral band	2.2 – 4.3 $\mu\text{m}$ Customization between 1 – 5 $\mu\text{m}$ on request
Available detector configuration	Active cooling

### ON BOARD:

- Venus Express
- Exomars / Nomad

## SCORPIO

640x512 -15  $\mu\text{m}$

Spectral band	2 – 5 $\mu\text{m}$ Customization between 1 – 5 $\mu\text{m}$ on request
Available detector configuration	Active cooling

### ON BOARD:

- Exomars / ACS MIR

## MARS

320x256 -30  $\mu\text{m}$

Spectral band	7 – 13.5 $\mu\text{m}$ Customization between 7 – 15 $\mu\text{m}$ on request
Available detector configuration	Active cooling

### ON BOARD:

- GISAT

