

# AstroScope™

for Nikon and Canon dSLR Cameras

AstroScope™ is an advanced night vision module that incorporates a state-of-the-art image intensifier and high quality optics to transform dark scenes into bright, high resolution images and videos. The AstroScope™ is specifically designed to be used with a Nikon or Canon digital camera. The modules mount seamlessly between the camera body and lens. AstroScope™ delivers seamless integration with the camera body and requires no additional batteries. When you need to get the shot, AstroScope™ delivers.

## ENHANCE YOUR VISIBILITY IN LOW LIGHT / NO LIGHT



**MILITARY-GRADE NIGHT VISION**



**ENHANCES EQUIPMENT YOU ALREADY USE**



**WHITE PHOSPHOR OR GREEN PHOSOPHER OPTIONS**



**QUICK CONNECT/DISCONNECT, NO CABLES OR CHARGING**



**VARIABLE GAIN ADJUSTMENT FOR VARIED CONDITIONS**

SURVEILLANCE

LEISURE

DEFENSE

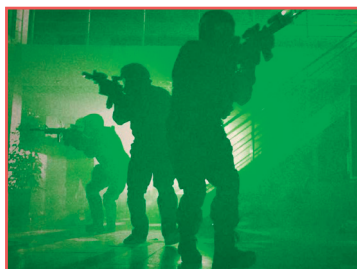


FOR EXPORT ONLY

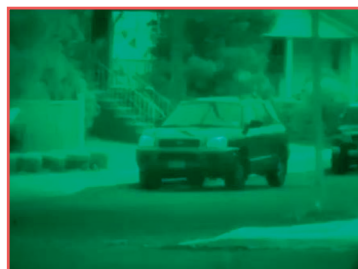
# ●● CONVERT YOUR dSLR CAMERA INTO A HIGH-PERFORMANCE NIGHT VISION SYSTEM ●●



Tactical Imaging



Law Enforcement



Surveillance

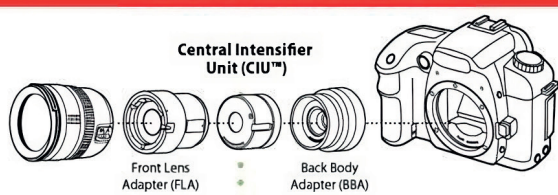


Wildlife Management

## Astroscope Modular Configurations

At the heart of the AstroScope is a Central Intensifier Unit that, with additional components, can be reconfigured as shown below.

Canon or Nikon SLR Camera



CIU

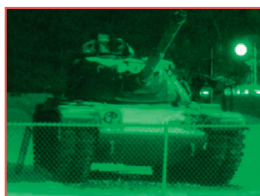
### GENERAL SPECIFICATIONS

Intensifier	■ Generation 3 mil-spec, 18 mm GaAs, MCP
Lifetime	■ >12,000 hours continuous use
Power Requirements	■ <300mW (<50mA typical)
Operating Temperature	■ -20° to 50°C
Storage Temperature	■ -40° to 80°C
Water Resistance	■ Splash Proof
Warranty	■ 1 Year, workmanship and materials

Without AstroScope™



With AstroScope™



Both shots were taken using the same camera settings

Shutter Speed: 1/40; No Flash; Lens Aperture: F/5;  
Focal Length: 52 mm; ISO: 800; Exposure Comp: 0

Manufacturing Time: 4-6 Weeks, not including shipping.  
Call for pricing.

Export of this product is controlled by the U.S.  
Department of State with ITAR requirements. Prior  
authorization is required for export or transfer.

### LYNRED HEADQUARTERS DEVELOPMENT & PRODUCTION CENTER

Actipole - CS 10021 - 364, route de Valence  
38113 Veurey-Voroize - France  
Phone +33 (0)4 76 28 77 00  
info@lynred.com

### LYNRED ASIA PACIFIC PTE LTD

5 Shenton Way,  
#22-04 UIC Building  
068808 Singapore  
info@lynred.com

### LYNRED USA

373 US Highway 46W  
Fairfield, NJ 07004, USA  
Phone +1 973.882.0211  
info@lynred-usa.com

### NIT (New Imaging Technologies) Premium SWIR by LYNRED

1 impasse de la Noisette  
91370 Verrières-le-Buisson - France  
Phone +33 1 64 47 88 58  
info@new-imaging-technologies.com

Additional parts upon request.